




CABINETS
CONNECT


CONCIERGE DESIGN PACK

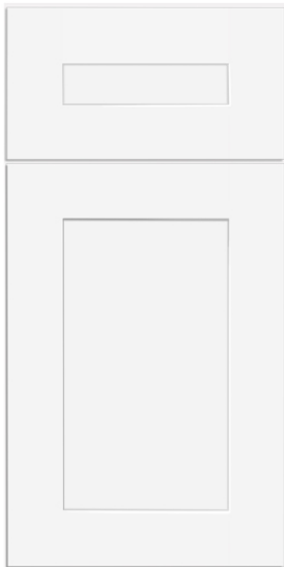
*P*ROJECT

John Doe
Kitchen
6.2021

*D*EALER

Cabinets Connect
sales@cabinetsconnect.com
1-800-556-6821

- Online Only
- Ships in 7-10 Days
- Limited Lifetime Warranty
- Fully Assembled
- All Plywood Cabinetry



Nantucket Polar White

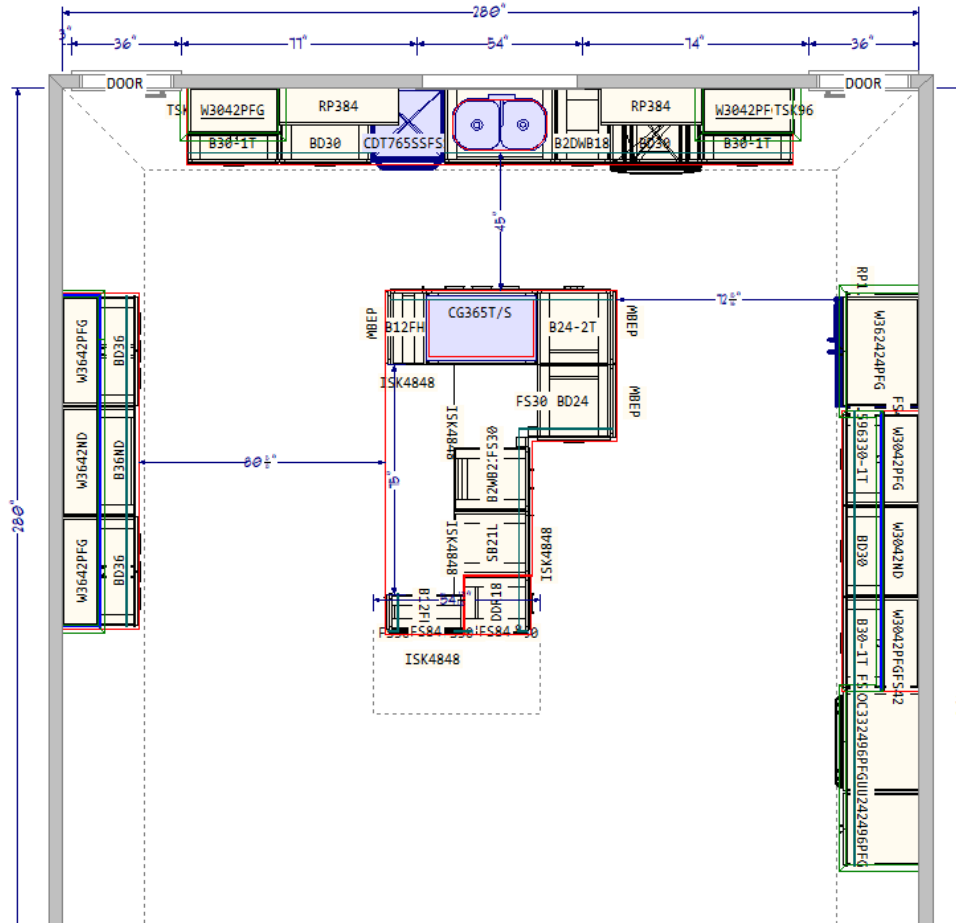





CABINETS
CONNECT



FLOOR PLAN






CABINETS
CONNECT


DRAWINGS & PERSPECTIVES





CABINETS
CONNECT


DRAWINGS & PERSPECTIVES





CABINETS
CONNECT


VIRTUAL TOUR



360°
VIEW

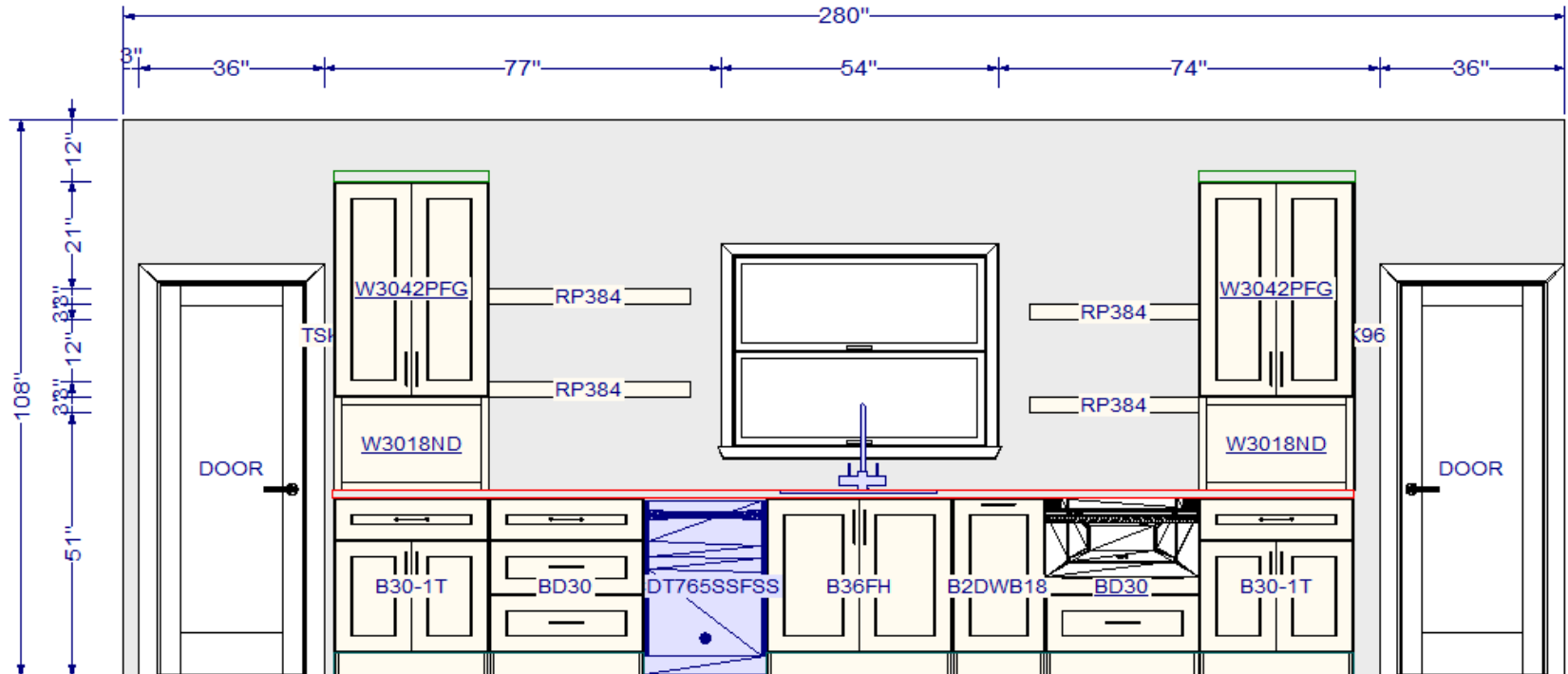
We have provided you with an immersive 3D experience that makes you feel like you are right inside your new design – while sitting at home.

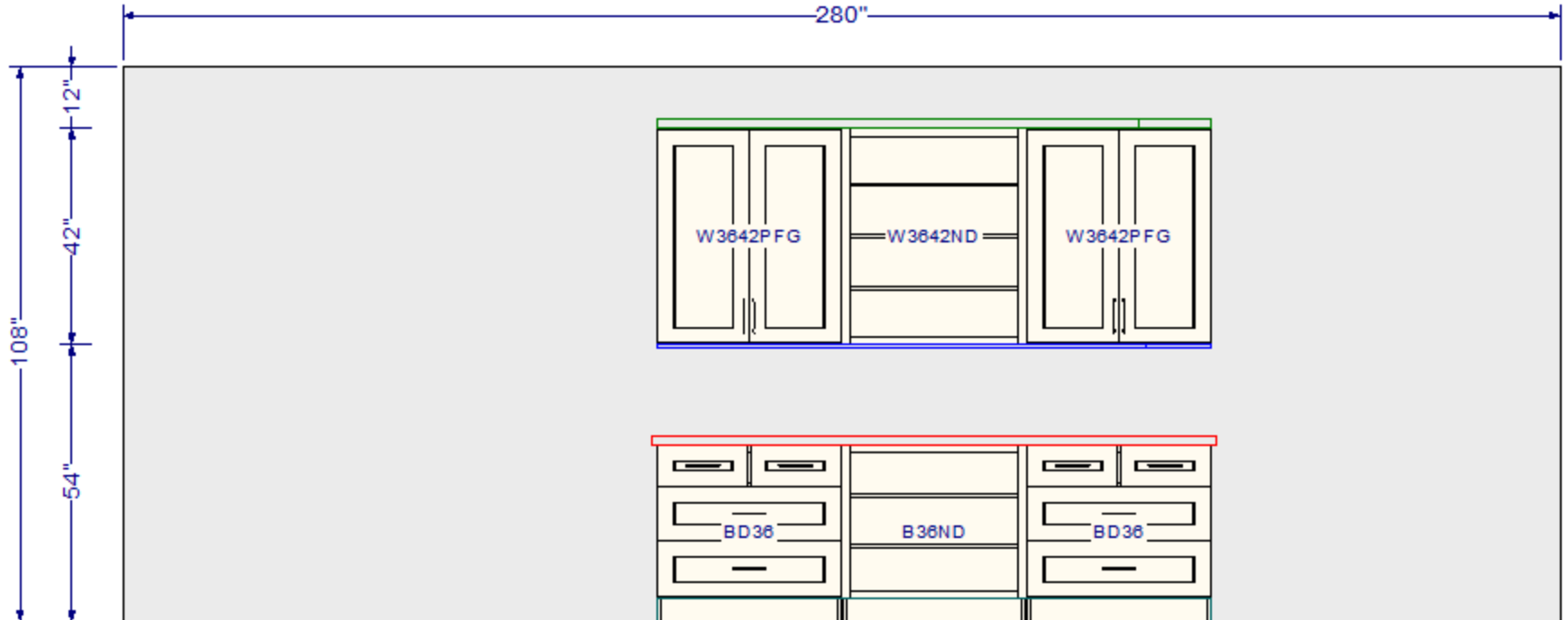
Simply use this panoramic view link and open it in your web browser or on your mobile device and share with friends and family!

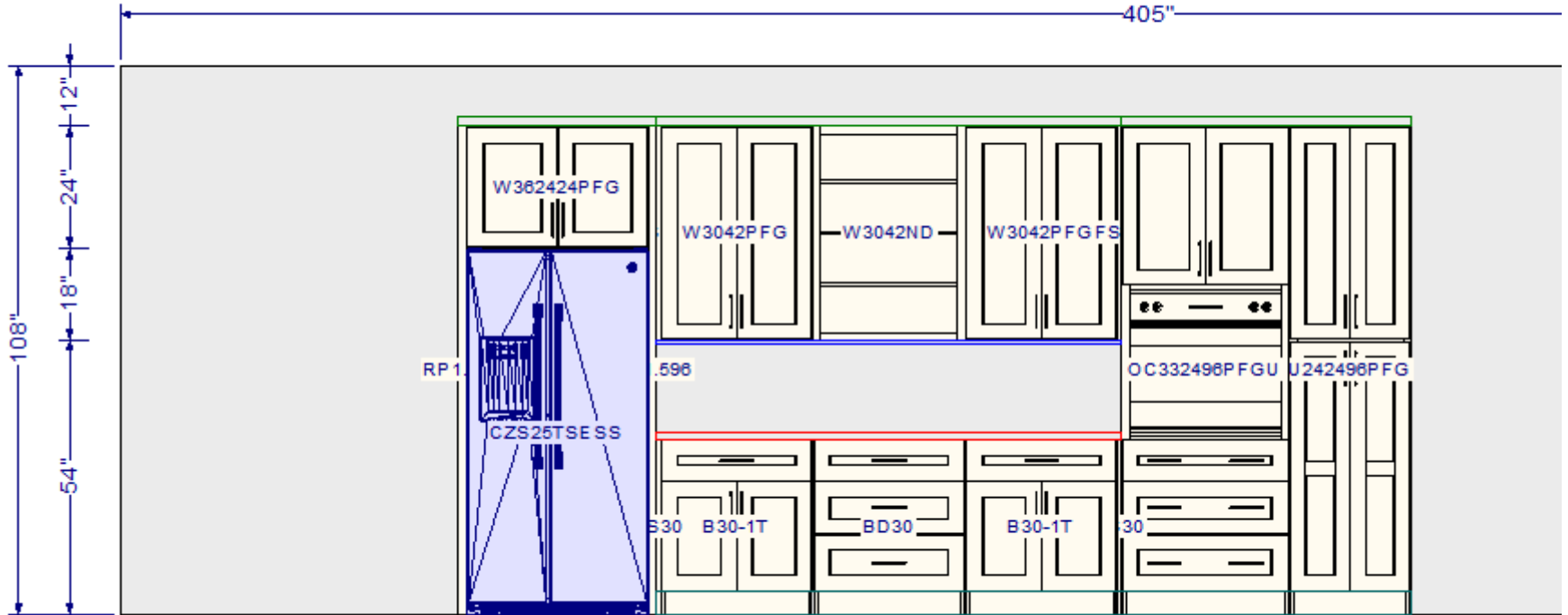
Try it Now!

Click on the icon to the left to open the immersive 360 degree experience in a new window.

If you're viewing from a mobile device such as a tablet or smartphone, simply move your device around to view the whole room!

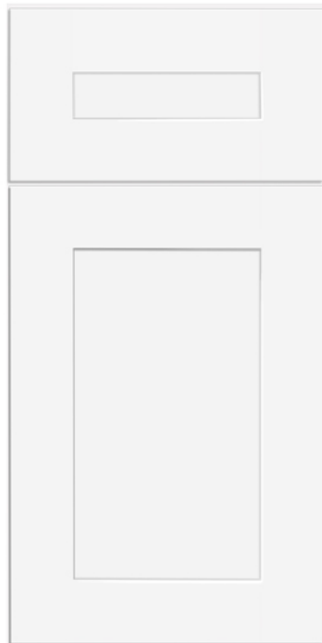




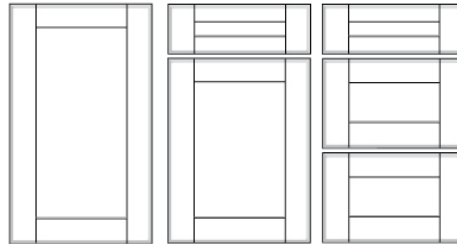


Your door style selection...

...goes great with*



Nantucket Polar White (NPW)



- 3/4" thick solid MDF 3" wide Shaker frame wall and base doors with 5/8" thick solid MDF recessed center panels
- 3/4" thick solid MDF 3" wide Shaker frame drawer fronts with 5/8" thick solid MDF recessed center panels
- Fully concealed hinges
- Available in Polar White painted finish
- Decorative hardware required



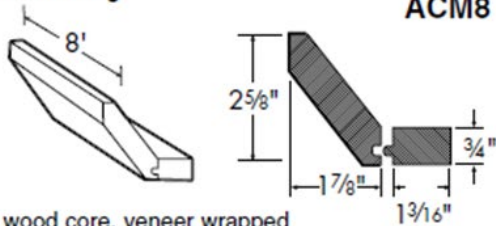
DH5016-96BRN

5-3/8" Tubular Bar Pull
3-3/4" center

**PLEASE SELECT
HARDWARE**

**Decorative hardware not included in your quote. Ask your designer for details!*

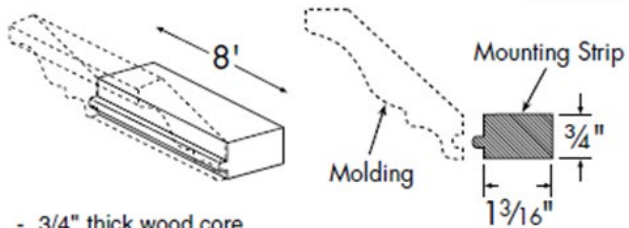
Angle Crown Molding



ACM8

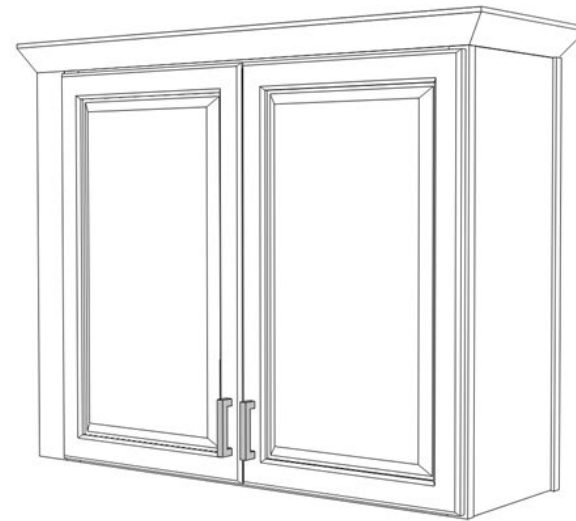
- 3/4" thick wood core, veneer wrapped
- Use with TMMS8 for top of cabinet installation

Top Molding Mounting Strip



TMMS8

- 3/4" thick wood core



Angle Crown Molding 8' (ACM8) when attached directly to top of wall cabinets must be installed with Top Molding Mounting Strip 8' (TMMS8)

1/4" Thick solid wood veneer or white vinyl
Finished front side only

Matching Toe Kick 8' (MTK8) is used to cover the unfinished toe space of base cabinetry, and to help hide any gaps between cabinetry and cover field-constructed cabinet platforms.

3/4" thick solid wood
Face and all edges finished

Fillers are used to cover the space between a wall and cabinetry to allow doors and drawers to open without binding. They may also be used between cabinetry to act as a spacer or as specified by your designer.

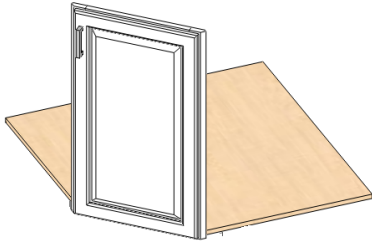
1/4" Thick solid wood
Bold outline represents finished side

Scribe Molding 8' (SM8) is used to trim or 'scribe' along a wall or ceiling to hide any gaps between the cabinetry and the uneven surface. It can also be used to finish the end run of Matching Toe Kick 8' (MTK8)

1/4" Thick solid wood
Bold outline represents finished side

Batten Molding 8' (BM8) is used so cover a seam between two panels, or as a decorative molding on a crown assembly.

CORNER SINK

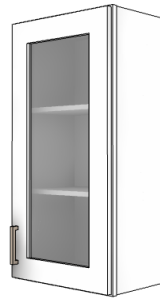


A **Corner sink** configuration consists of a 17" face frame with door attached, and a 36" corner floor bottom.

No side panels or backing are included for this assembly. Maximum sink width is 25 3/4".

Floor support and toe kick must be field constructed.

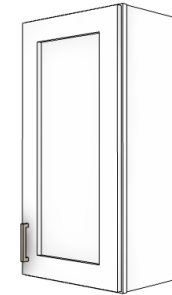
GLASS DOORS



Glass Door Cabinets include clear glass. This is shipped separately for your cabinet order and must be installed on the job site.

The interior of the cabinet is finished to match the face frame of the cabinet. The cabinet door is prepped for glass should you choose to purchase your own glass.

CABINET SIDES



Cabinetry sides are prefinished to match the color of the face frame. The finished side is not a flush to frame finish and will have a 1/4" reveal.

Optional decorative panels are available in select sizes. Please let your designer know if you are looking to view this option.



OVEN CABINET



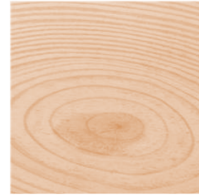
Oven cabinets are standard configured for a single oven and are designed to be field-modified to accommodate a double oven configuration.

This includes removing drawers, depending on the cut-out size required.

Please refer to your appliance's installation specifications for cutout requirements.

Please refer to our *Specification Guide* for maximum and minimum allowable cutout dimensions.

FINISHES



Characteristics of Wood and Finish Styles

To be sure you have the correct expectation of your door style color, finish and species we have provided a link to educate you on [The Natural Beauty Of Wood](#).

We offer more than just wood doors! We also offer a thermofoil door style that is 3/4" MDF sealed with a durable vinyl laminate, and designer painted door styles that are 3/4" MDF with a durable painted finish.

MAINTENANCE



Wear & Tear Care

Daily use can result in surface damages to your cabinetry. As a convenience, your order includes a touch-up pen and fill stick to assist you with minor repairs. Small scratches can be covered by "coloring" with the color matched pen. Deep scratches or gouges can be filled with the color matched fill stick. To use the fill stick, run it firmly along the scratch, applying enough pressure to fill the scratch. Remove excess wax with the edge of a thin plastic card. Allow wax to dry and buff with a soft cloth.



APPLIANCES

Designers use the model numbers provided to decide which cabinet(s) or application will work best in your design.

We are not responsible for knowing or following state, city or local codes for install, however follow the manufacture of the appliance's recommendations. If installation code requirements differ from what the design shows, this verification is the responsibility of the installer or homeowner to communicate to the designer.

If during the design review process a change is needed to meet the codes set in place, it is the responsibility of the installer/homeowner to communicate this information to the designer.

MEASUREMENT VERIFICATION

Purchaser/Homeowner must Verify prior to purchase:

All wall lengths, ceiling and wall heights
(including soffits or bulkheads)

All window and door sizes and exact locations

Any floor or ceiling obstacles that interfere with the design

Appliance, sink sizes and flooring footprint locations if applicable

All plumbing, electrical and/or gas are in the correct location on this design OR that they can be relocated.



WHAT TO EXPECT

DELIVERY



All Cabinetry orders are shipped prepaid to your location with Curbside Delivery Service.

Deliveries are made to the curbside address you specify on your order. You are responsible for moving the cabinetry into your residence or to a dry secure location.

All shipments are valid for one customer, to one location in the continental United States and cannot be separated into multiple deliveries to multiple locations.

Deliveries are made only to a home or job site.

All shipments are palletized and shrink-wrapped.

A delivery agent will call to make a delivery appointment (Monday-Friday 8:00 AM EST-5:00 PM EST) within a four-hour window you specify.

Shipping and handling charges cover one delivery attempt to you. In the event that, due to your availability or circumstances, an order is not deliverable you will be responsible for any additional shipping and handling charges.

RECEIVING



Deliveries are made to the curbside address specified on your order.

This is an opportunity for you to check your delivery against the Bill Of Lading, and inspect the packages for any visible shipping damage.

Please remember to receive, inspect, and sign for all deliveries.

If the item(s) that you purchased have become damaged during shipping, please document the damages with the freight company upon delivery. Notify us immediately via email at sales@cabinetsconnect.com. All freight damage must be reported within 48 hours.

All items should be checked against the Bill Of Lading and packing slip supplied by the driver for each delivery.

The Bill Of Lading indicates the number of cartons in the delivery, but does not represent the number of pieces. Some items may be boxed together such as molding, hardware, etc.

Cartons containing multiple items will have separate labels on the carton for each item included, and will correspond to the packing slip.

If you have additional questions on receiving your order, please email us at sales@cabinetsconnect.com.